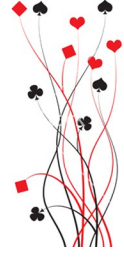




VANCOUVER UNIT 430 ROUNDUP SECTIONAL November 4, 5 & 6, 2016



**Sunbury Hall - 10409 Dunlop Road
Delta, B.C., V4C 2L1
New Location!!! - Map on back of flyer**

Friday Afternoon

EV Hodge Charity Pairs
0-200 Pairs

November 4, at 1:00 pm

(0-750 / 750-2000 / 2000+)
(0-50/ 50-100 / 100-200)

Friday Evening

Membership Appreciation Stratified Open Pairs
Membership Appreciation 0-750 Pairs

November 4, 7:00 pm

(0-750 / 750-2000 / 2000+)
(0-100 / 100-300 / 300-750)

The Friday evening games are subsidized by Unit 430 (Cost for an ACBL member is \$2, \$13 for a non-member)

Saturday November 7, 11:20 am – 12:10 pm

Slam Bidding Methods

Celebrity instructor: Nick Stock

(Interactive – Audience Participation - Handouts)

Saturday Afternoon

Flight A/X Pairs (1st of 2 sessions)*
Flight B/C/D pairs
*Single session entries accepted

November 5, 12:30 pm

(0-2000 / 2000+)
(0-200 / 200-500 / 500-1500)

Saturday Evening

A/X Pairs (2nd of 2 sessions)*
B/C/D pairs
*Single session entries accepted

November 5, 6:30 pm

(0-2000 / 2000+)
(0-200 / 200-500 / 500-1500)

Sunday Morning & Afternoon

Stratified Open Swiss
Non Life Master Swiss

November 6, 10 am & TBA

(0-750 / 750-2000 / 2000+)

Buffet luncheon is included in the Sunday entrance fee

Online Partnership Desk: www.vancouverbridge.com

Tournament Co-Chairs: Jim McKenzie: jimfmckenzie@hotmail.com
Angela Fenton: angelagf@telus.net

604-374-0109
778-386-4343

Fees:

\$10.00 per player for Pairs session. \$100 per team for Sunday Swiss
\$3 additional per person/session for non or unpaid ACBL members

Stratification:

By average but each player must be below the event limit

Handicap Policy:

KO Events may be handicapped if only 1 bracket

Coffee / Tea:

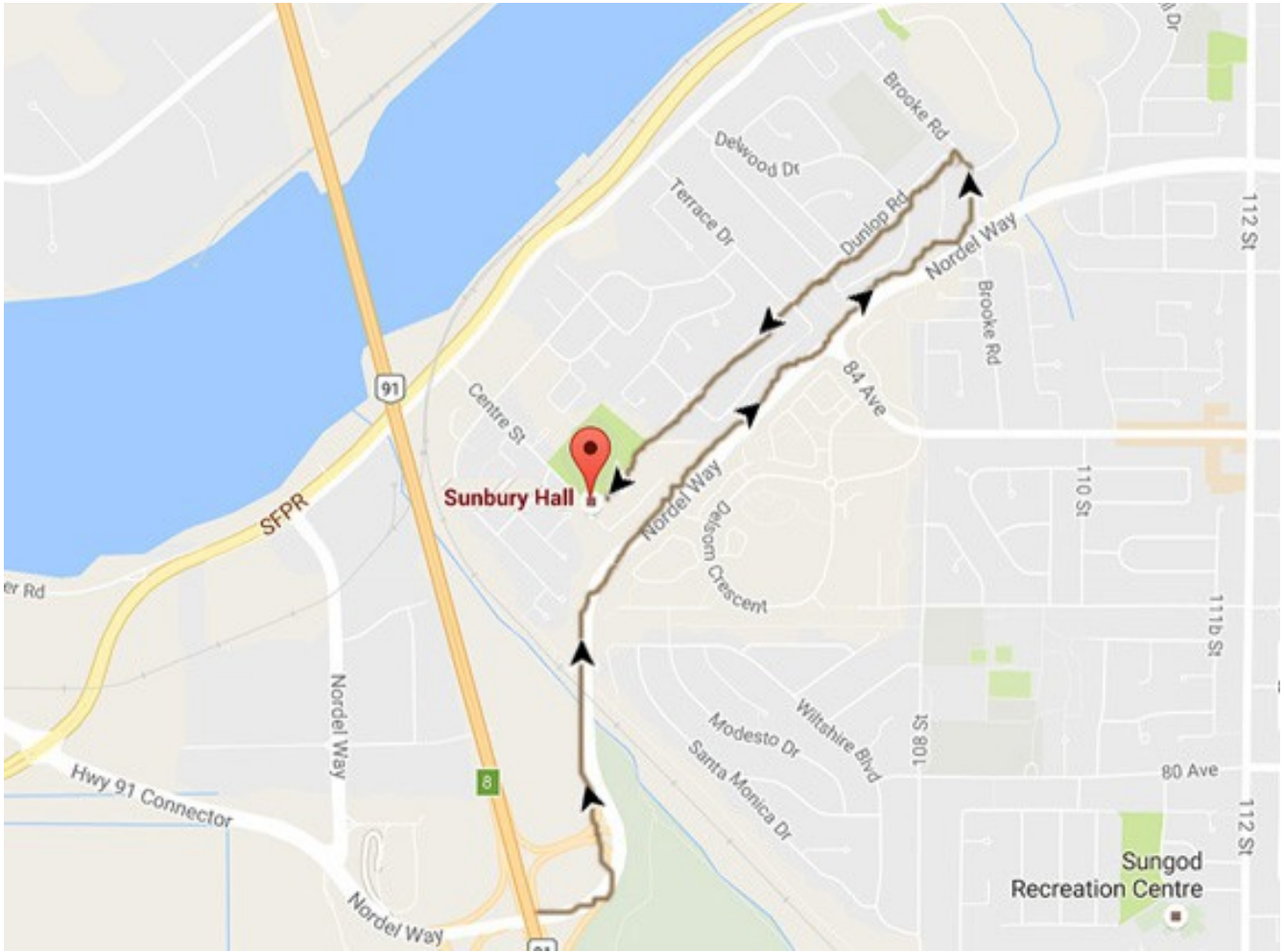
FREE if you bring your own cup. Or cups are available for \$1 environment levy.

Tournament Results:

www.vancouverbridge.com

**Smoke free playing site – Please be considerate
and avoid the use of scented products
(Please ensure your car is legally parked)**





Coming from the South

Take BC 91 North
Take Exit 8 for Nordel Way
Continue East on Nordel Way
Turn Left on Brooke Road
Turn Left on Dunlop Road
Continue to 10409 Dunlop Road
Sunbury Hall

Coming from the North

Take BC 91 South
Take Exit 8 for Nordel Way
Continue East on Nordel Way
Turn Left on Brooke Road
Turn Left on Dunlop Road
Continue to 10409 Dunlop Road
Sunbury Hall